

# IDEAL 1

Attractively designed desktop shredder with innovative features.

max.  
**12**  
sheets

**24 cm**

**Level P-5** 2 x 15 mm particle cut

Sheet capacity\*: 10-12 | 8-10

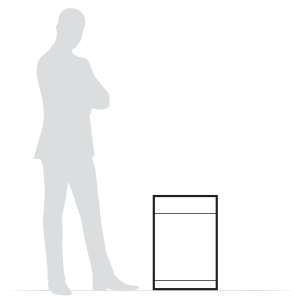


\* A4 paper 70 g/m<sup>2</sup> | 80 g/m<sup>2</sup>

## Technical specifications

<b>Volume</b>	25 litres (shred bin)
<b>Power</b>	230 V / 50 Hz**
<b>Motor capacity</b>	390 Watt single phase motor

\*\* other voltages available



<b>Dimensions</b>	600 x 410 x 240 mm (H x W x D)
<b>Weight</b>	23,5 kg

## Product characteristics

State-of-the-art shredder with ageless design and attractive metal housing. SPS (Safety Protection System): patented, electronically controlled safety flap in the feed opening as additional safety element; EASY-SWITCH – intelligent control element indicating the operational status of the shredder with back-lit symbols; automatic reverse and power cut-off (avoids paper jams); automatic stop if the shred bin is full; electronic door protection via a magnetic switch; double motor protection; energy saving mode. Photo cell controlled automatic start and stop. Quiet, powerful and energy-efficient single phase motor. High-quality, paper clip proof cutting shafts from special hardened steel with lifetime guarantee. Lightweight shred bin from impact-resistant plastic.



# IDEAL

[WWW.IDEAL.DE](http://WWW.IDEAL.DE)

# IDEAL 1

## Features



### SOLID STEEL CUTTING SHAFTS

Robust and durable: high-quality paper clip proof cutting shafts with lifetime guarantee under conditions of fair wear and tear.



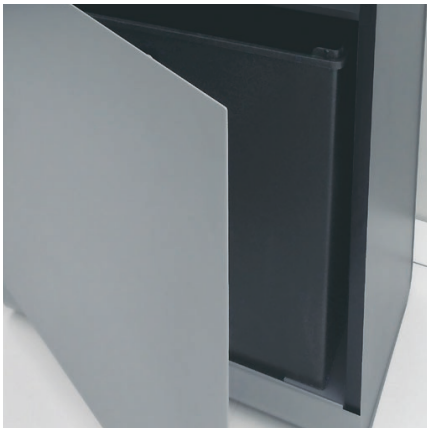
### EASY-SWITCH

Ease of operation: intelligent multifunction switch element with integrated optical signals indicating the operational status.



### PATENTED SAFETY FLAP

Extremely safe: electronically controlled safety flap in the feed opening to keep fingers, ties or other objects away from the cutting shafts.



### AUTOMATIC STOP

Automatic stop if the shred bin is full and electronic door protection via a magnetic switch.



# IDEAL